



# Sustainable Delaware

# NEWSLETTER

VOLUME 2, ISSUE 1

FEBRUARY 2013

## INSIDE THIS ISSUE:

Temperature	1
Arts Castle	1
Arts Castle cont'd	2
Investing	2
Temp cont'd	3
Gardening	3
Calendars	4

## Several Extraordinary Decades of Higher Temperatures

The following is an excerpt from an article by Gordon Aubrecht, Professor of Physics, Ohio State, for the full article please go to our website or directly at: <http://www.sustainabledelawareohio.org/articles/Several%20extraordinary%20decades%20of%20higher%20temperatures.pdf>

The industrial revolution began in the mid-1800s. We humans got busy using machines powered by fossil fuels, using the air and nearby streams as handy sewers. After all, how could we puny beings affect anything very much? There were about 1.2 billion of us in 1850, about 300 million of whom lived in the industrialized world. In the meantime, we number over 7 billion, of whom over 90% live in the industrialized world. Our effect on the planet is now far over 20 times as great as in 1850.

Americans, choking in the cities and with rivers that burned, forced passage of the clean air and water acts in the 1970s, and Europe, Oceania, Canada, and Japan cleaned up their acts as well. But most people continue to live among the wastes. In January 2013, for example, Beijing and other Chinese cities suffered under air pollution so severe that people were asked not to go outside at all. Wildfires raged in Australia so extensive that satellites could see them. Temperatures flirted with 50 °C (120 °F) for extended periods. Here in Ohio, the U.S. Department of Agriculture moved most of our state from Zone 5 to Zone 6 on the Plant Hardiness Zone Map in 2012.

*Continued on pg. 3*

## The Castle is Going Green

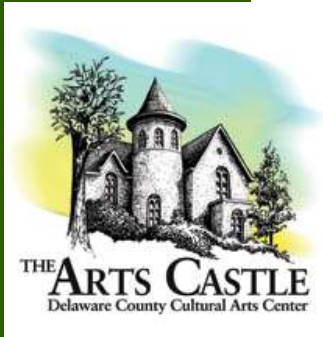
While art has a history of utilizing green materials and concepts, this year the Arts Castle, Delaware County's Cultural Arts Center, is highlighting sustainability by "Going Green". The "Castle Going Green" program will use art to educate and promote sustainability within our community. The Arts Castle has received funding for this program from PNC Arts Alive, which will be used to assist in funding green art classes as well as bringing in artists who specialize in green art, that is artists whose materials are eco-friendly, recycled, etc. There are many classes to choose from

that are green, they are listed with a 'G' in the course catalogue, which can be found online here: <http://artscastle.org/classes.html>.

The first artist to come to Delaware for this program is the environmental artist Aurora Robson, who turns waste stream materials into works of art. Robson's art has been featured in premier galleries and at museums throughout the world and she has won numerous awards for her outstanding work.

*Continued on pg. 2*

## The Castle is Going Green (cont'd)



Robson currently has a major exhibit entitled "Sacrifice + Bliss" on display at the Franklin Park Conservatory and Botanical Gardens in Columbus. It will be there through April 28, 2013.

She will be in Delaware on January 30, 2013, giving a lecture to the 3<sup>rd</sup> and 4<sup>th</sup> grade students at Smith Elementary School and an open lecture and Q & A to the public from 7pm to 8pm at the Bayley Room in the Beeghly Library at Ohio Wesleyan University at 40 Park Avenue, Delaware, Ohio.

You can see more details of the event at the Arts Castle Facebook event listing here: <https://www.facebook.com/TheArtsCastle/events>.

*"We are seeing the birth of a new perspective of the world, where ecology and economics are two sides of the same coin."*

*- Leif Johansson*

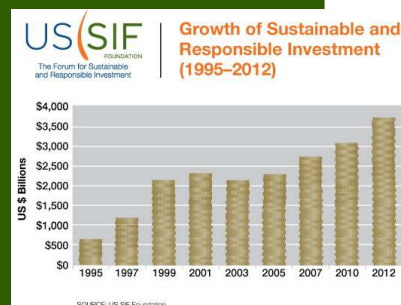
## Huntington Embraces Ethical Investing

Socially responsible investing (SRI) is one way to be sustainable and make an ecological difference. More and more individuals are incorporating sustainability principles into their investment strategy. To many shareholders, maximizing investment returns is not the primary goal. They want to make money in a thoughtful, responsible, and ethical way that does little or no harm to society and the environment. In response to this demand, more and more banks are making such investment options available in the form of mutual funds or exchange-traded funds (ETFs). Interest in "green" investing is growing rapidly all around the world. In Europe, there exist several eco-banks offering hundreds of investment opportunities. Typically, SRI banks stay away from fossil fuels, nuclear energy, mining, guns, alcohol, tobacco, gambling, and pornography. Instead, they favor renewable energies, clean technology, eco-farming, fair-trade commodities, healthful food, and companies that respect human rights and animal rights.

Environmentally sensitive individuals, called "EcoLogical Strategy ETF." It is big on natural and organic foods, utilities with portfolios of renewable energy, companies that help customers be more energy-efficient, and recycling.

Admittedly, banks and other corporations are in the business of making money. "Profit is key," Huntington says. Sometimes, the environmental label is little more than a marketing ploy. Undoubtedly, some purists will question whether eBay, Johnson & Johnson, Starbucks, and Walt Disney (all part of Huntington's ETF holdings) are truly "green" businesses. But it is clear that Huntington, with assets of \$57 billion and headquartered in Columbus, appears to have realized the huge potential of SRI, as yet unexplored and underused by American investors. Being "green" and making money are not mutually exclusive goals. Huntington's pioneering initiative is encouraging. Let's hope that all banks will soon offer SRI options.

*Editor's note: Sustainable and green investing is becoming more popular, please check with your bank or investment firm to see what options are available.*

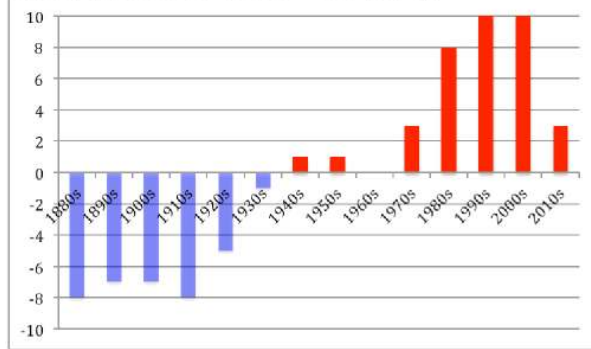


Locally, Huntington Bancshares recently created a groundbreaking and closely watched new investment option for envi-

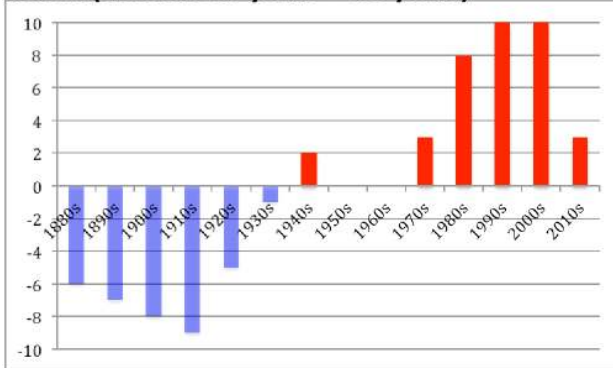
# Several Extraordinary Decades (cont'd)

The National Oceanic and Atmospheric Administration (NOAA), the Goddard Institute for Space Science (GISS), and the Hadley Centre-University of East Anglia Climate Research Unit (HadCRU) have each produced public libraries of historical temperatures. The NOAA and GISS databases extend from 1880 and the HadCRU database extends from 1850 through the present. I have analyzed the data for the three libraries of temperatures. The first three diagrams show data by decade. Above the axis are the 27% of years that are the warmest and the ones below the axis are the 27% that are the coldest in the record. (The 27% rule is often used in statistics to discriminate higher from lower values.)

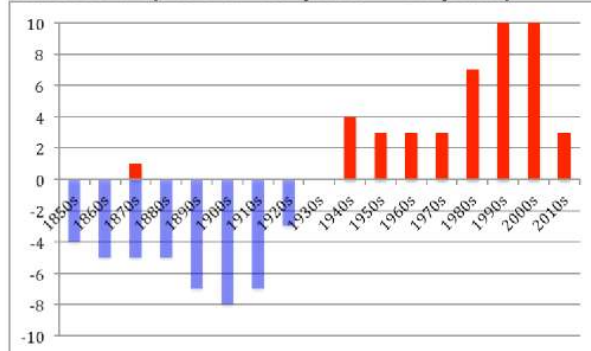
**GISS (27% of 133 years -> 36 years)**



**NOAA (27% of 133 years -> 36 years)**



**HadCRUT4 (27% of 163 years -> 44 years)**



## Time To Think About This Year's Garden

The middle of winter may seem too early to start planning a garden, but it's not. Now is the time to order seed catalogs and begin browsing the many plant varieties available. What better way to beat the winter blues than by fantasizing about which vegetables you'd like to grow? Perhaps this year you'll try something new (to you) like rutabagas, okra or popcorn?

We ordered catalogs from three heirloom seed companies back in November, which arrived in time for Christmas. Now we're taking our time to decide what we'll plant in our backyard garden and what we'll plant in the community garden plot we intend to rent this year. Catalog companies will take your order early and may ship seeds right away or at the correct planting

time along with any live plants they may sell. Hopefully we'll narrow down the tomato choices from 195 to just the 3 or 4 we really want to try by the end of February, put in our order, and wait for the sure sign of spring—seeds in the mail!

If you know exactly what you want to plant, or prefer browsing the seed packets in person, visit a local nursery for a smaller but good variety of traditional, heirloom and organic seeds. However, I prefer flipping through catalogs in the dark of winter, planning and plotting this spring's garden.



**Community Garden at Ross Park**



**Our Mission:** *Sustainable Delaware is a group of citizens focused on promoting environmental, social and economic sustainability for the Delaware community*

Editor: Matt Vogt

Contributing Authors:

Gordon Aubrecht

Tom Wolber

Kelly Vogt

Matt Vogt

Have a comment, idea or article for the newsletter? We would love to hear from you, please email us at:

[info@sustainabledelawareohio.org](mailto:info@sustainabledelawareohio.org)

Visit us on the web at [www.sustainabledelawareohio.org](http://www.sustainabledelawareohio.org) and on Facebook at Sustainable Delaware Ohio



## Winter Farmer's Markets

### **Powell Winter Farmer's Market**

February 9 and 23 and in March 9 and 23 10a to 1p East Community Room at 47 Hall St, Powell

### **Worthington Winter Farmer's Market**

Saturdays 10a to 1p The Shops at Worthington Mall, 7227 N. High St, Worthington

## February Events

For more details and upcoming events, see the calendar on the website at <http://www.sustainabledelawareohio.org/Events.html>

1/30/13 7p -8p	Aurora Robson, lecture and Q&A; Bayley Room, Beghley Library, OWU
2/1/13 6p	First Friday and Chocolate Walk; Downtown Delaware
2/2/13 10a -1p	Fiber Circle; Stratford Ecological Center
2/6/13 6:30p -8p	Sustainable Delaware Board Meeting; Delaware County Library, Main Branch
2/9/13 9:30a -11:30a	Sustainable Delaware Meeting; Delaware County Library, Main Branch
2/9/13 10a -4p	Growing a Community by Gardening; Columbus State Community College, Delaware
2/12/13 1p -3p	Herbal Study Group; Stratford Ecological Center
2/16/13 10a -12p	Herbal Study Group; Stratford Ecological Center
2/16/13 All Day	OFFEA Conference; Granville, OH
2/17/13 All Day	OFFEA Conference; Granville, OH
2/20/13 6:30p -8p	Build a Bluebird Box; Deer Haven Preserve
2/22/13 6p	Ca\$hMob; Meet at the Main Street Delaware office
2/23/13 10a -12p	A Green Life: Easy, Healthy; Stratford Ecological Center
2/27/13 6:30p -8p	Build a Bluebird Box; Deer Haven Preserve
3/1/13 6p	First Friday; Downtown Delaware
3/2/13 10a -1p	Fiber Circle; Stratford Ecological Center
3/2/13 8a -12p	Maple Days 2013; Stratford Ecological Center, reservations required
3/6/13 6:30p -8p	Sustainable Delaware Board Meeting; Delaware County Library, Main Branch
3/9/13 9:30a -11:30a	Sustainable Delaware Meeting; Delaware County Library, Main Branch